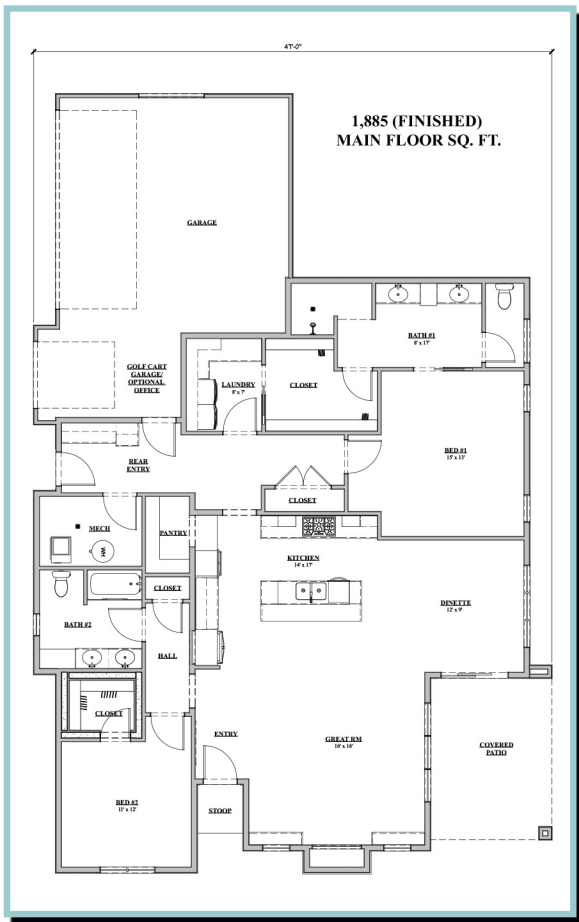




PRIMROSE VILLA

1,885 SQ. FT.



- HARDI-PLANK CONCRETE LAP SIDING
- HERITAGE 30 YEAR SHINGLE - CLASS 4
- PELLA LIFESTYLE WINDOWS
- ARISTOKRAFT CABINETS
- COSENTINO COUNTERTOPS
- 50 GALLON WATER HEATER
- 93% LENNOX FURNACE & 13 SEER A/C
- POWER HUMIDIFIER
- INTERIOR DESIGN PACKAGES
- LARGE WALK-IN PANTRY
- WALK-IN SHOWER
- KOHLER & DELTA FAUCETS
- BASEMENT OPTIONS AVAILABLE
- LOFT OPTIONS AVAILABLE
- ZERO ENTRY
- GOLF CART GARAGE

